



---

BEAUMONDE



The new height of  
luxury living





# BEAUMONDE

EXPERIENCE LIVING IN THE TALLEST  
RESIDENTIAL TOWER OF SILIGURI



Beaumonde is spread over

**12.3** acres

Imagine that much of luxurious nature living.

---

**6** towers

**24** storeys

**504** premium apartments

**3/4/5** BHK homes

**2500** sq.ft. to **100000** sq.ft. SBUA

**1000**+ car parking units

Shopping Mall forthcoming

*Enough space for  
countless stories!*





Experience  
serenity

amidst 4+ acres  
of greenery





Experience the luxury  
of owning a home  
designed by the  
eminent architect  
Mr. Sanjay Puri. Mumbai







Experience   
the euphoria 

of unwinding in  
Siliguri's highest  
sky lounge



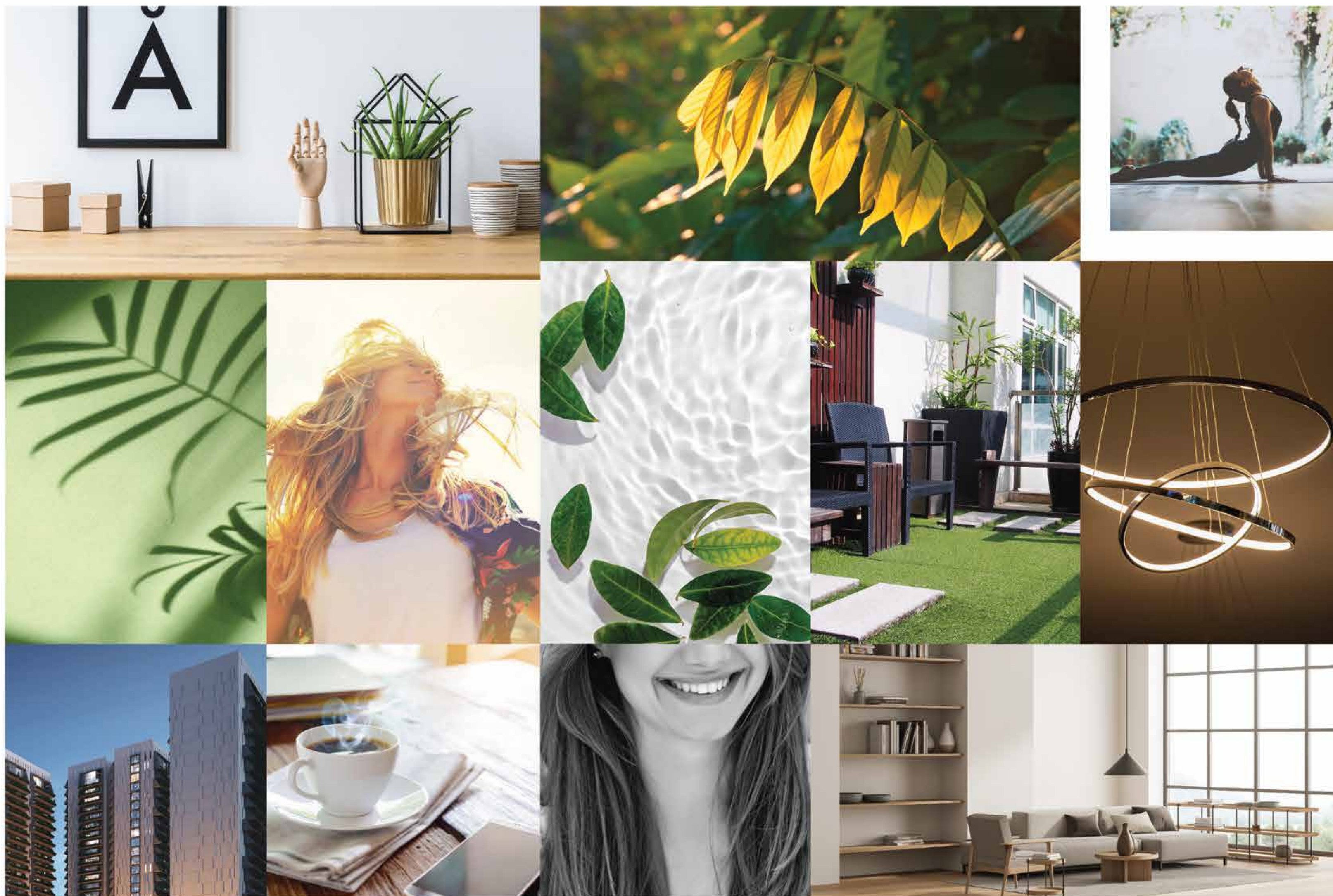


- Visually stunning apartments
- Curated lifestyle
- Premium clubhouse
- Multipurpose lawn
- Semi-covered swimming pool
- State-of-the-art towers
- Exquisite design
- World-class amenities

*That's the  
height of  
luxury living!*







# Come home to Beaumonde

## WHERE LIFE MEETS LUXURY

Here, you can immerse yourself in a community that offers a combination of high-end amenities, stylish design, and comfortable living spaces that will give you a luxurious lifestyle without compromising on comfort.

There is much more to this space that cannot be expressed, but only experienced!

That cannot be said through words in a brochure, but pictured with the eyes closed.




Address  
your aspiration

Imagine your  
presence amidst  
opulence at  
**Beaumonde**







Behold a piece of   
architectural marvel

AN ICONIC MASTERPIECE DESIGNED  
BY THE ACCLAIMED, AWARD-WINNING  
ARCHITECT, MR. SANJAY PURI.

Beaumonde is a celebration of Mr. Puri's  
upmarket real estate oeuvre and is his first  
luxurious, prestige-enhancing offering in  
Siliguri and East India.

With a legacy of contributing to the  
development of 400+ residential projects  
over his distinguished career, Mr. Puri has  
embellished the skyline through iconic  
projects in India and around the world.

Beaumonde is proud to have robust  
construction through top-quality masonry  
and use of top-notch building materials.  
With earthquake-resistant structural design,  
the towers are safe and secured.

Literally!



*A truly remarkable home! *







## Luxury meets greenery

Nestled in the heart of a distinguished precinct, where you can leave the city far behind and get up close to peace and tranquility.

The city's only luxurious residential project with the maximum green cover, that is offering a slew of modern lifestyle amenities.

Uninterrupted views of tea estates and the Himalayas beyond. Sought by many. But truly yours!

100 sq.ft. open space per person, 2X more than the statutory pandemic requirement.





  
*Come home  
to harmony*  
CONFLUENCE OF NATURE  
AND ARCHITECTURE!



Thoughtfully crafted lavish homes

100% Vaastu-compliant residences set amidst nature. With each apartment there are large linear landscaped decks for a villa-in-the-sky living experience. Full French windows overlooking tall trees with an everchanging canopy of light and shade.

A sensual serenade! 🌿







1.60.000 sq.ft. of greens

Luxury residences designed to give you  
views of your lush internal garden.

Spilling out onto the verdant external  
gardens!







Stately elegance of the buildings accentuated by stunning terraced gardens. Highlighting a unique louvered façade. Designed to soothe the eyes. Together with a multipurpose terrace-level sky lounge. Where you can be with friends, chat over chai or just gaze at the million stars in the sky!

Ah.  
That feels good!



An aerial photograph of a lush, dense green forest. The canopy is thick with various types of trees and plants, showing a rich texture of green. A large, semi-transparent yellow circle is positioned on the right side of the image. Inside this circle, there is a small green leaf icon above the text "Embrace sprawling space", which is written in a dark, elegant cursive font.

Embrace  
sprawling  
space





# Club Beaumonde

A true exceptionality crafted for utmost indulgence. Its sophisticated design and opulent amenities are a testament to exclusivity and refinement.

A gently sloping clubhouse rooftop garden cascading down to a refreshing array of lifestyle amenities such as a privacy-ensconced swimming pool, gymnasium, multipurpose room and indoor games!







# Open up to the opulence of outdoors

Space for sculpted landscape of crisp-cut hedges, soft grasses and flowering shrubs. Embrace the great outdoors and unleash your active lifestyle.

Futsal Court • Cricket Pitch • Flower Garden  
Multipurpose Lawn • Open Amphitheatre  
Walking/Jogging Track • Mini Golf Putting  
Hopscotch Area • Kids' Play Area • Pet Trail  
Barbeque zone • Viewing Pavilion





MULTIPURPOSE LAWN





MINI GOLF PUTTING





CRICKET PITCH





## BARBEQUE ZONE







# Indulge in the comfort of homely indoors

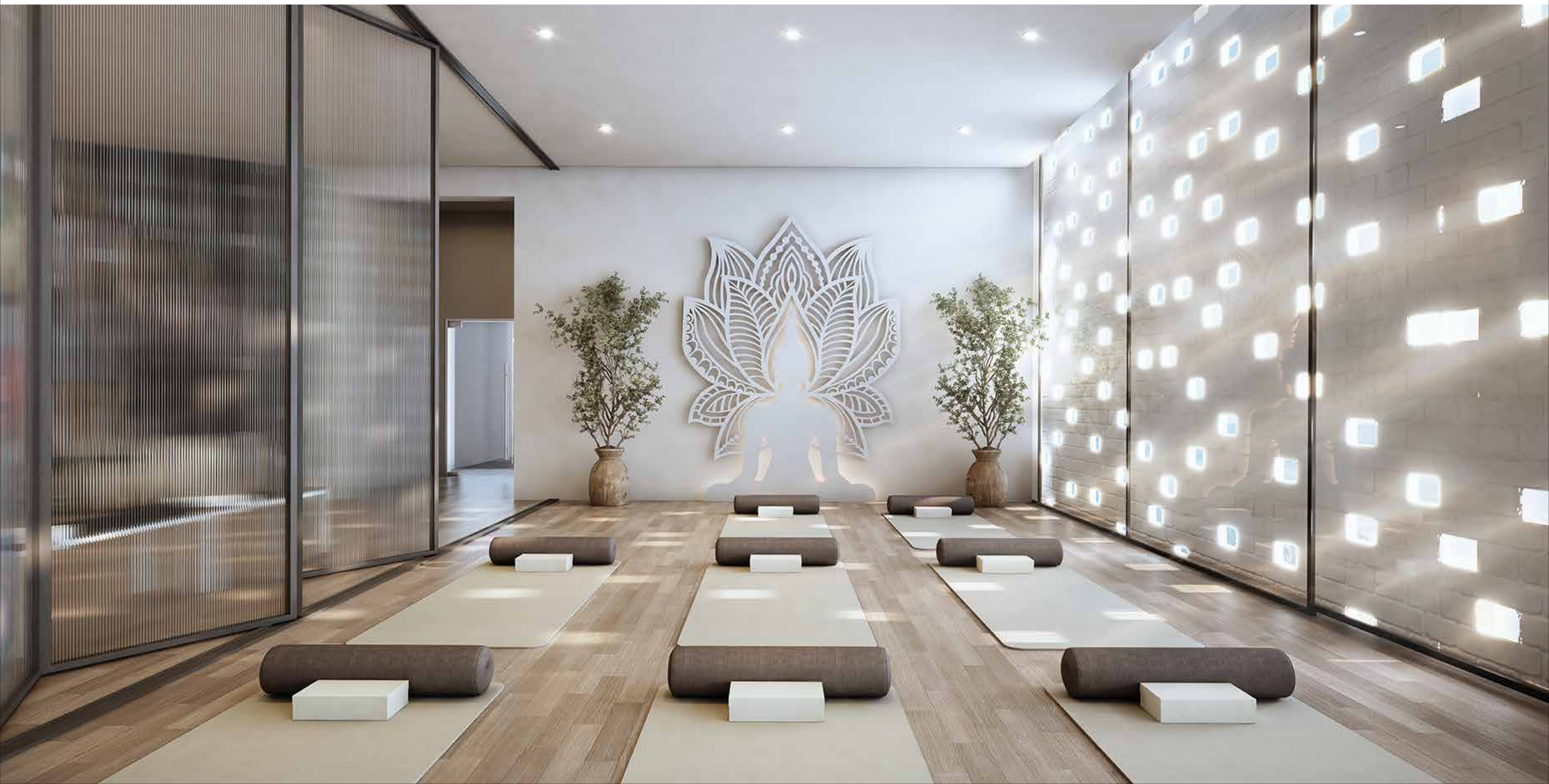
Discover the ultimate joy in recreation and convenience within our indoor havens. Some parts designed for play, others for you to hide away!

Indoor Games Room • Indoor Kids' Play Room  
Day Care Center • Co-working Space • Library  
Yoga/Meditation Room • Lounge Room  
Table Tennis • Cafe Area





## YOGA/MEDITATION ROOM





## DAY CARE CENTER





# LIBRARY





## INDOOR GAMES ROOM







# Come together for an extravagant celebration

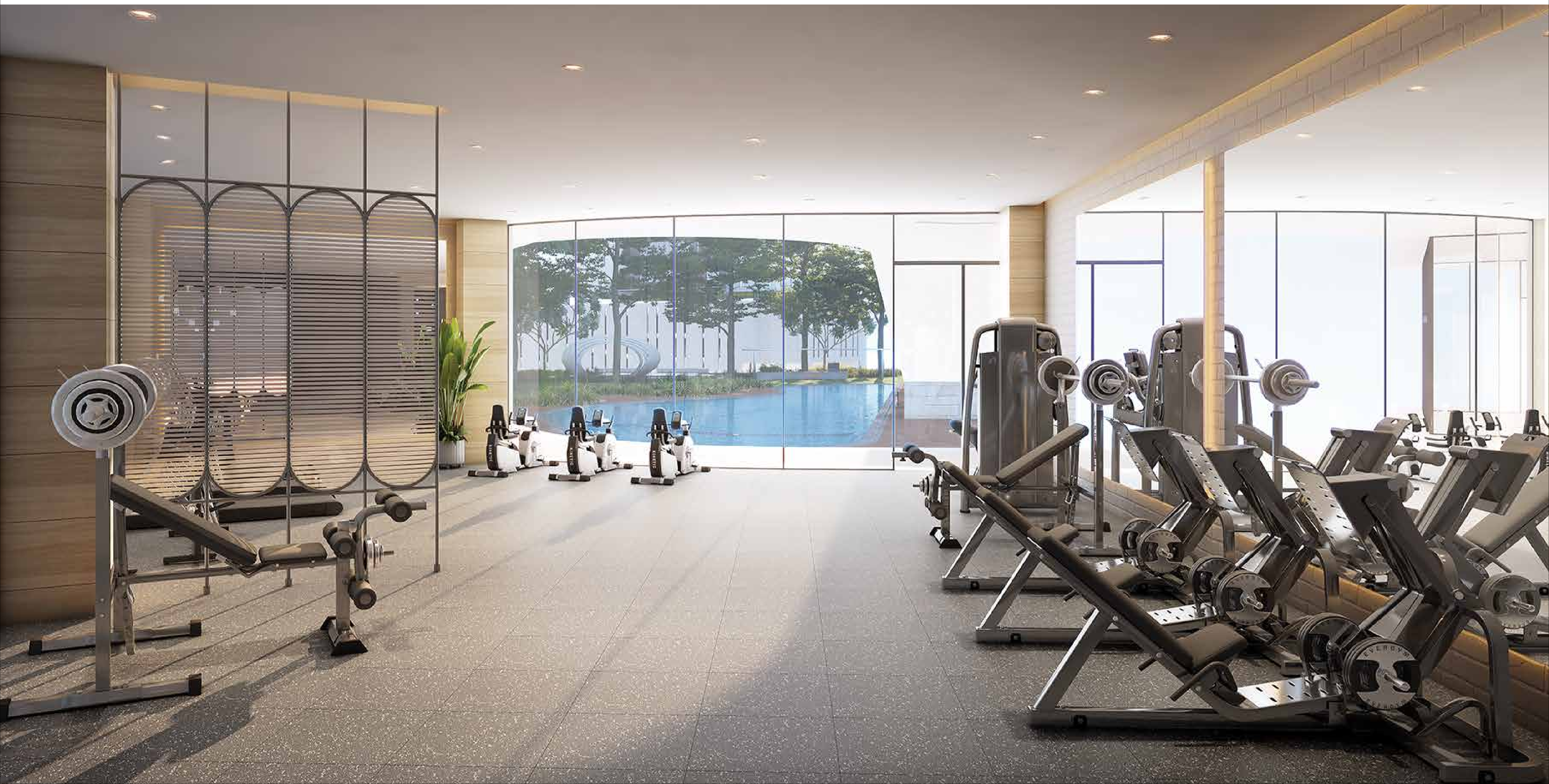
With endless clubhouse amenities and  
luxurious spaces to wind down, get cozy  
with your close ones.

Gymnasium • Yoga Deck • Health Club  
Swimming Pool • Pool Deck  
Party Room (Banquet)





GYMNASIUM







  
Feel the  
touch of  
tranquility





# Tranquility is measured by abundance.

Abundance of opportunities for a joyous childhood. Abundance of space for the young and the young at heart.

Abundance of amenities at the podium area designed in large continuous open area.

Kids' Play Area • Sky Lounge • Palm Court  
Open-to-sky Amphitheatre • Walking/Jogging Track  
Lawn Tennis Court • Badminton Court  
Basketball Court • Multipurpose Lawn  
Skating Rink • Sitout Cove





YOGA LAWN



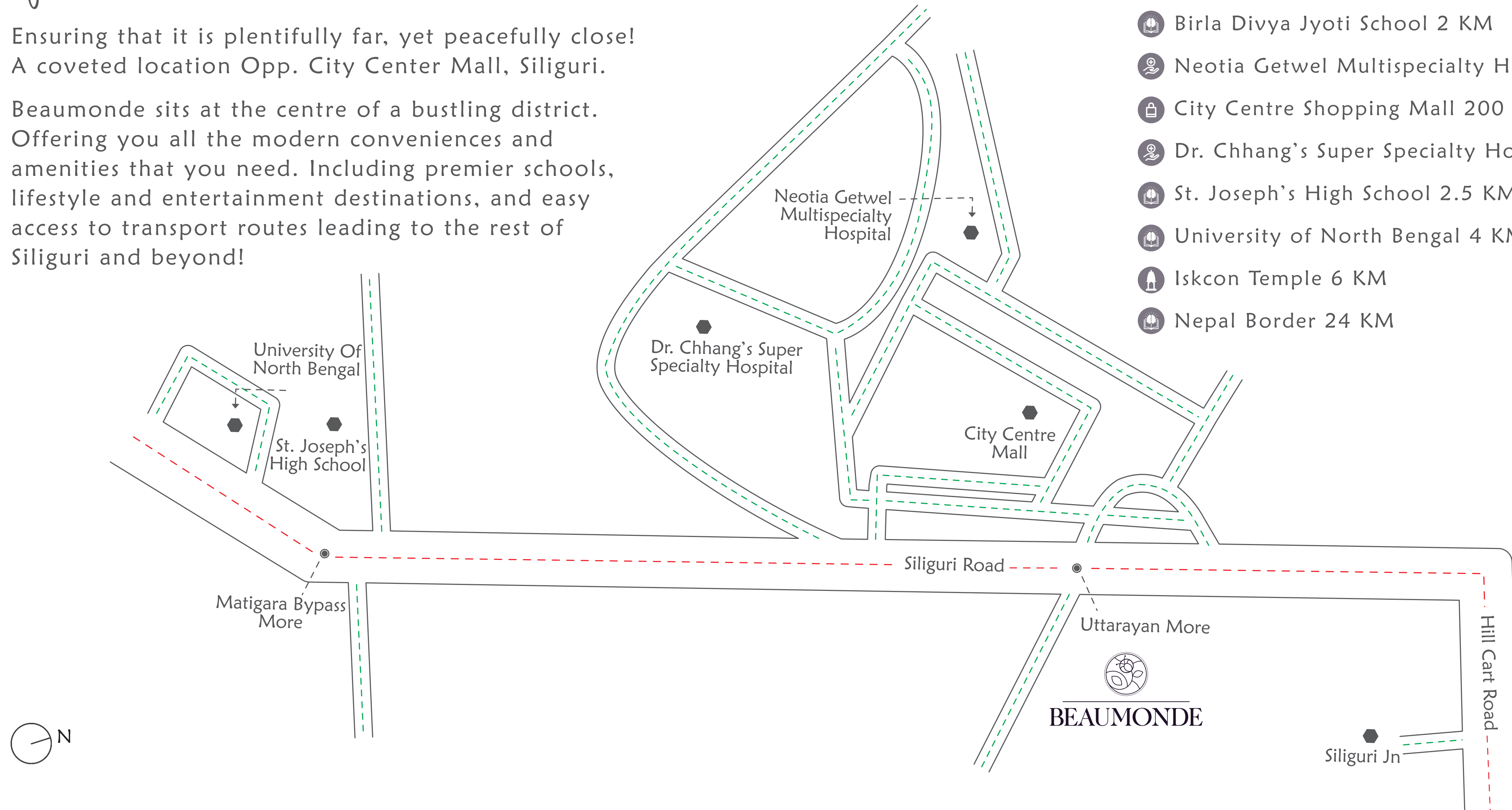


# Come home to a world of convenience

Ensuring that it is plentifully far, yet peacefully close!  
A coveted location Opp. City Center Mall, Siliguri.

Beaumonde sits at the centre of a bustling district.  
Offering you all the modern conveniences and amenities that you need. Including premier schools, lifestyle and entertainment destinations, and easy access to transport routes leading to the rest of Siliguri and beyond!

- ✈ Bagdogra International Airport (IXB) 8 KM
- 🚆 New Jalpaiguri Railway Station (NJP) 5 KM
- 🚆 Siliguri Junction Railway Station 1.5 KM
- 🎓 Birla Divya Jyoti School 2 KM
- 🏥 Neotia Getwel Multispecialty Hospital 600 MT
- 🛍 City Centre Shopping Mall 200 MT
- 🏥 Dr. Chhang's Super Specialty Hospital 800 MT
- 🎓 St. Joseph's High School 2.5 KM
- 🎓 University of North Bengal 4 KM
- 🕌 Iskcon Temple 6 KM
- 🇳🇵 Nepal Border 24 KM





Beaumonde  
is quiet



The plot design ensures an expansive, noiseless, traffic-free central green. That meanders to link all residential towers. Ensuring that the buildings are paced out, yet linked in!

With the panorama of the tea estates and the mighty mountains embracing you, tranquility is woven into a tapestry of distinctive style at Beaumonde.

All apartments are three-sides open with ample natural light and ventilation. Bringing the outdoors in.


Ensuring healthy and spirited living.









Picture a live-in   
with nature

Picture wide open spaces!

Picture peace and tranquility!

Picture getting time back in your hands!

Picture luxury nestled in nature!

Picture a lifestyle in a self-sustaining  
natural habitat!

Picture a picture that speaks more than a  
thousand words!

Open your eyes to a new-age way of living!



# DEVELOPERS

---



The Ajay Begraj Group was inspired by the notion of creating lively, effervescent environments that are high in quality and aesthetics. As an eminent Siliguri-based real estate company, the group has built numerous landmark projects, ranging from stunning apartments and high-quality commercial spaces to retail areas that have completely altered Siliguri's skyline. What distinguishes the group, led by visionary Mr. Ajay Begraj, is its single-minded commitment on excellence and quality, whether in architecture or customer service.

The business is well renowned for its immaculate construction quality and striking architectural visual designs, even as it believes in meeting deadlines and providing 100% client satisfaction, which makes its projects instant crowd pleasers. The Group's appeal stems from its strong values of innovation, investment in quality materials, top-tier resources, talented personnel, the best designers, and global standard compliances, which set it apart from the competition. Shantiniketan, Cosmos Mall, Anandville, Gitanjali, and Platina are some of the group's significant creations.



Shantiniketan



Anand Ville



Gitanjali



# DEVELOPERS

---



With a successful legacy in business in the line of tea packaging and rice processing in rice mills. Mr. Narayan Agarwal has a keen business acumen. He is putting their gathered experience into his new venture. NS Developers who strive to build a legacy of honesty and authenticity in crafting residential and commercial spaces for the finest modern living. All the projects by NS Developers reflect their keen sense of discipline and aims to excel in his new endeavour. They have also constructed The Imperial Inn Hotel on Jalpai more, Siliguri and are currently coming up with their brand new NS Jewellers Showroom alongside many ongoing projects. The brand believes in building a reputation through the work that it does, and it promises to bring forth several more projects of excellence in the future.



Elements



Amara



## LANDOWNERS

---



AB Group

With a presence that spans three generations of entrepreneurs, the diversified A.B. Group is committed to nation-building through its longstanding presence in the businesses of cement, steel, logistics and government infrastructure projects. The Group has a especially strong presence in the cement sector of Eastern India.



‘LR Group’ was founded by Shri Ramabtar Berlia in the year 1980 as a tea trading Business House.

Presently, it has grown into a fully Integrated & a leading Tea group in North Bengal with multiple Tea Estates & factories, Tea Export House, Tea Packaging, Warehousing and Branding under its wing.

The group has taken multiple meaningful CSR initiatives in North Bengal since it’s inception.

LR Group now, with its esteemed partners, launches a Premium residential project “Beaumonde” aiming to cater to top quality luxury living in the heart of the City for the people of Siliguri and the neighbouring states.



With a legacy of over 70 years, the K.B.T. Group is one of Eastern India's major tea houses with well-established packaging and retail operations. The "City Gold Tea" and "City Gold Masala" labels of the Group are widely available across India and favoured by tea enthusiasts and connoisseurs alike.



## LANDOWNERS

---



Established in 1998, the Dalmia Gold Tea Group is a prominent tea house of Eastern India. The Group possesses longstanding expertise in the blending and packaging of premium teas sold under the well-known "Dalmia Gold" label. The Group is also progressively venturing into the high-end hospitality and retail sectors.



KISHEN M AGARWAL

The group started its journey with Stock Market Advisory Services in North Bengal by the name “Money Maker” in 1992 bringing in right knowledge and financial discipline among individual investors & beginners and further stepped into Real Estate Business in the year 2005. Apart from real estate, it also founded the first ever eggless premium bakery in North Bengal “The Victoria Junction” in the year 2009.



Established in 2003, Kuber Group is a leading brand in the Home Decor industry. The group also ventured in Real Estate in 2011 and has developed various commercial and residential projects in Siliguri.



# ARCHITECTS

---



New York's Archdaily Architizer has ranked Sanjay Puri Architects as one of the world's top-100 architects. Sanjay Puri Architects is also among the top-136 design firms in the world, according to the report. The company is number one on the global list of WA Community, UK award winners. The firm has won over 225 accolades, including 150 international prizes and 80 national awards, including "Best Housing Object of the Year 2018" at the World Architecture Festival in Amsterdam and "World's Best Residential Building" at the LEAF Awards in London.

Mr. Sanjay Puri is convinced that spaces in every project should be created with contextual evolution so that they can be experienced in novel ways by the users. Thus, each structure is built with environmental considerations and sustainable practices in mind. The substantial work completed by the company in its three decades of existence is a reflection of this deep-rooted philosophy.



Nokha Garden Library



India Aria Hotel



## ARCHITECTS

---



Green Architecture Consulting Engineers Pvt. Ltd. (GACE) is a Siliguri-based architectural practice that was founded in 1991. Following a humble start under the leadership of Mr. K.K. Roy, the firm expanded to become a well-established and reputable firm. GACE knows the worth of both time and money and has been efficient on both fronts. It is the needs, hopes, and imaginations of our patrons that serve as the inspiration for our work.



Alti Level, Sisabari





The new height of luxury  
is waiting for your arrival!



Developed by:



Disclaimer: The images are architect's expressions and are for illustrative purpose only. The terms and conditions of sale and usage of services depicted herein shall be subject to the agreement entered between the Promoter and the Allottee.