

SKYDALE  
LIVE ON CLOUD 9





A photograph of four tall, modern residential towers at dusk. The buildings have a textured, metallic facade and many windows, some of which are illuminated from within. The sky is a deep blue with some light clouds. The foreground shows some trees and a fence.

# TALLEST RESIDENTIAL TOWERS





# MODERN & LUXURIOUS

SKYDALE is a residential complex developed with a unique blend of urban living, healthy lifestyle, and natural beauty.





S K Y D A L E

# WHY SKYDALE?

- Tallest Residential Towers in Siliguri
- 268 Spacious Flats.
- 3 side open flats.
- Only 5 Flats in each Floor.
- 2 Passenger Lifts and 1 Service Lift in each tower.
- Attached to 80ft Road.
- Located Opposite of City Centre Mall, one of the most prominent locations in town.
- Ceiling Height 11.25 ft
- Outer Walls 8 inches thick
- Exclusive Club House - 32,000 sqft approx.
- Separate Sports Arcade - 16,000 sqft approx.
- Vastu Compliant Flats
- Gated Community



”

IMPROVE YOUR  
QUALITY OF LIFE

---





# CLUB - DALE

32,000 sqft. approx.

- Cafeteria
- Indoor Games Play
- Lounge Room
- Steam Room
- Tuition Room
- Creche
- Gymnasium
- Yoga Lounge
- Theatre
- Audio Visual Room
- Conference Room
- Board Room
- Banquet Hall
- Activity Room
- Party Hall





# SPORTS - ARCADE

16,000 sqft. approx.

- Temple
- Swimming Pool
- Cricket Nets
- Futsal Court
- Badminton Court
- Basketball Court
- Outdoor Party Lawn
- Multipurpose Outdoor Lawn
- Cabana Sitting



A high-quality architectural rendering of a modern interior space, likely a living and dining area. The scene is dimly lit, with light sources from recessed ceiling lights, a floor lamp, and a pendant light over the dining table. The living area on the left features a large, light-colored sectional sofa with several cushions, a low coffee table, and a large abstract painting on the wall. The dining area on the right has a long, dark wooden table with several modern chairs. A decorative centerpiece is on the table. The background shows a glass wall or door leading to an outdoor area. The overall aesthetic is contemporary and sophisticated.

# UNITS TYPE

---





# UNITS

---

- ✓ 3 BHK PREMIUM
- ✓ 3 BHK LUXURY
- ✓ 4 BHK PREMIUM
- ✓ 4 BHK LUXURY





YOUR ENTRANCE TO THE SKY

This architectural rendering depicts a modern high-rise apartment complex at dusk. The building features a dark, textured facade with numerous balconies and windows, many of which are illuminated from within. In the foreground, a prominent entrance gate is shown, featuring a large, illuminated sign that reads "SKYDALE LIVE ON CLOUD 9". To the left of the gate, a sign for "KAYA" is visible. The gate itself has a red and white striped barrier and a security booth with a guard. A red car is parked near the gate, and a white car is driving past on the right. The scene is set against a dark blue sky with some clouds, and the overall atmosphere is one of modern luxury and sophisticated design.



# MASTER PLAN

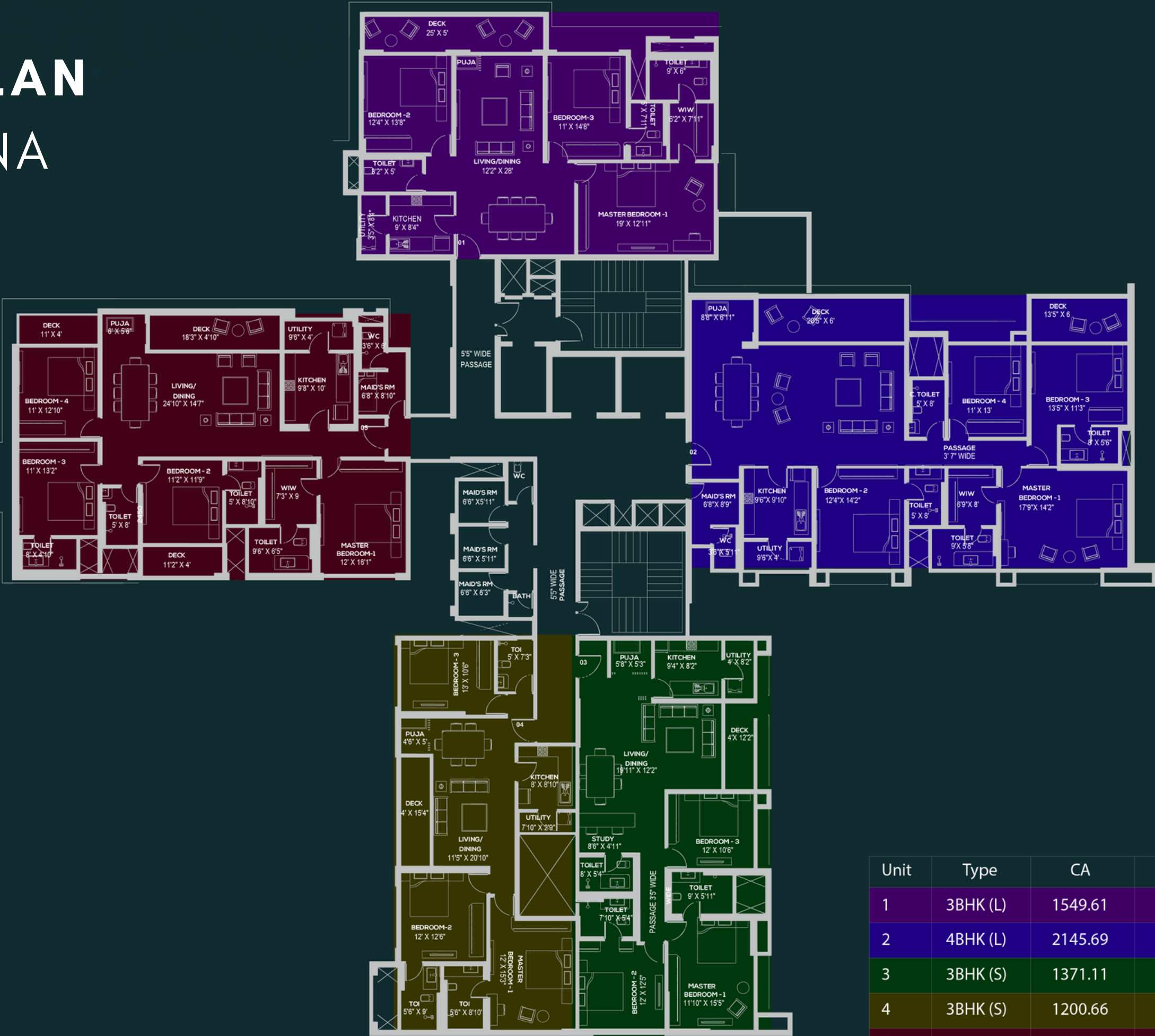




# TYPICAL FLOOR PLAN

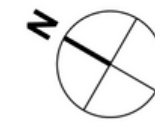
## TOWER : KAYA, YUNA

### 2ND TO 17TH FLOOR



Unit	Type	CA	BUA	SBUA
1	3BHK (L)	1549.61	1662	2216
2	4BHK (L)	2145.69	2278	3037
3	3BHK (S)	1371.11	1461	1935
4	3BHK (S)	1200.66	1321	1761
5	4BHK (S)	1858.87	2010	2679





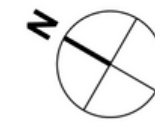
# TOWER KAYA

## 1ST FLOOR WITH TERRACE



Unit	Type	CA	BUA	SBUA	Extra Terrece (SBUA)
1	3BHK (L)	1549.61	1662	2216	NA
2	4BHK (L)	2145.69	2278	3037	1594
3	3BHK (S)	1371.11	1461	1935	1475
4	3BHK (S)	1200.66	1321	1761	NA
5	4BHK (S)	1858.87	2010	2679	NA





# TOWER YUNA

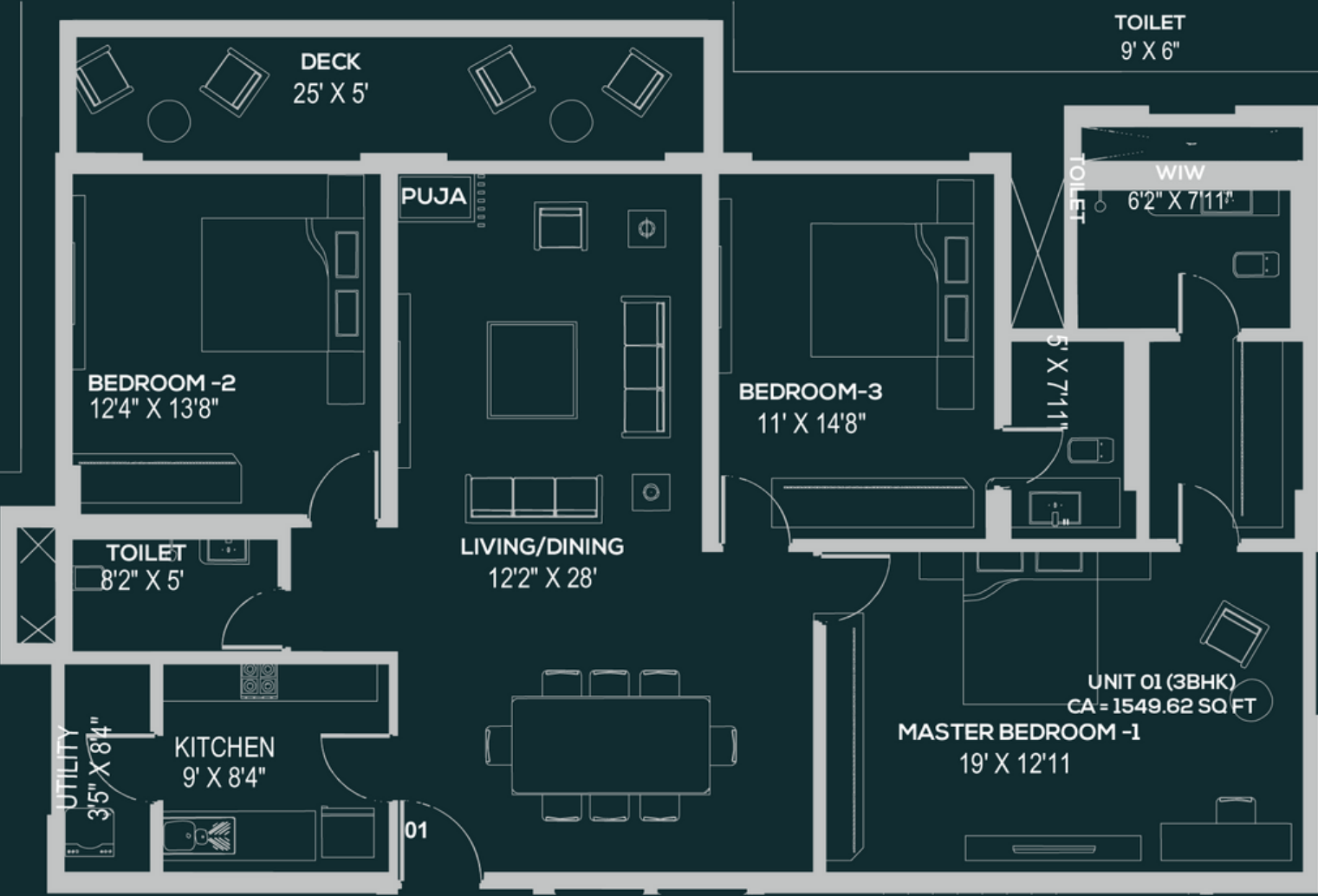
## 1ST FLOOR WITH TERRACE



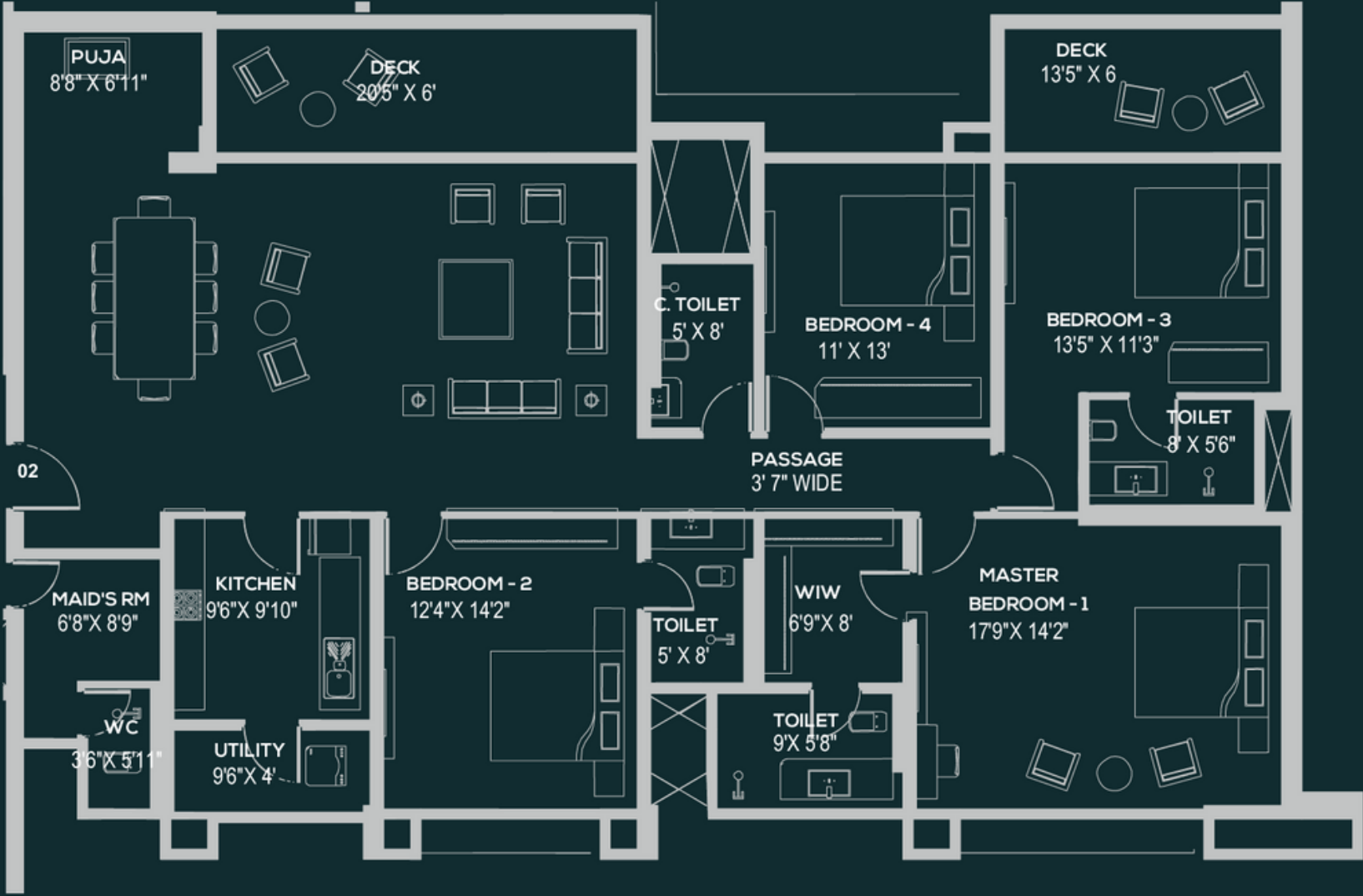
Unit	Type	CA	BUA	SBUA	Extra Terrece (SBUA)
1	3BHK (L)	1549.61	1662	2216	NA
2	4BHK (L)	2145.69	2278	3037	1594
3	3BHK (S)	1371.11	1461	1935	1475
4	3BHK (S)	1200.66	1321	1761	NA
5	4BHK (S)	1858.87	2010	2679	NA



TYPICAL UNIT PLAN  
TOWER : KAYA, YUNA



**UNIT - 1**  
SBUA - 2216 SQFT  
3 BHK - LUXURY

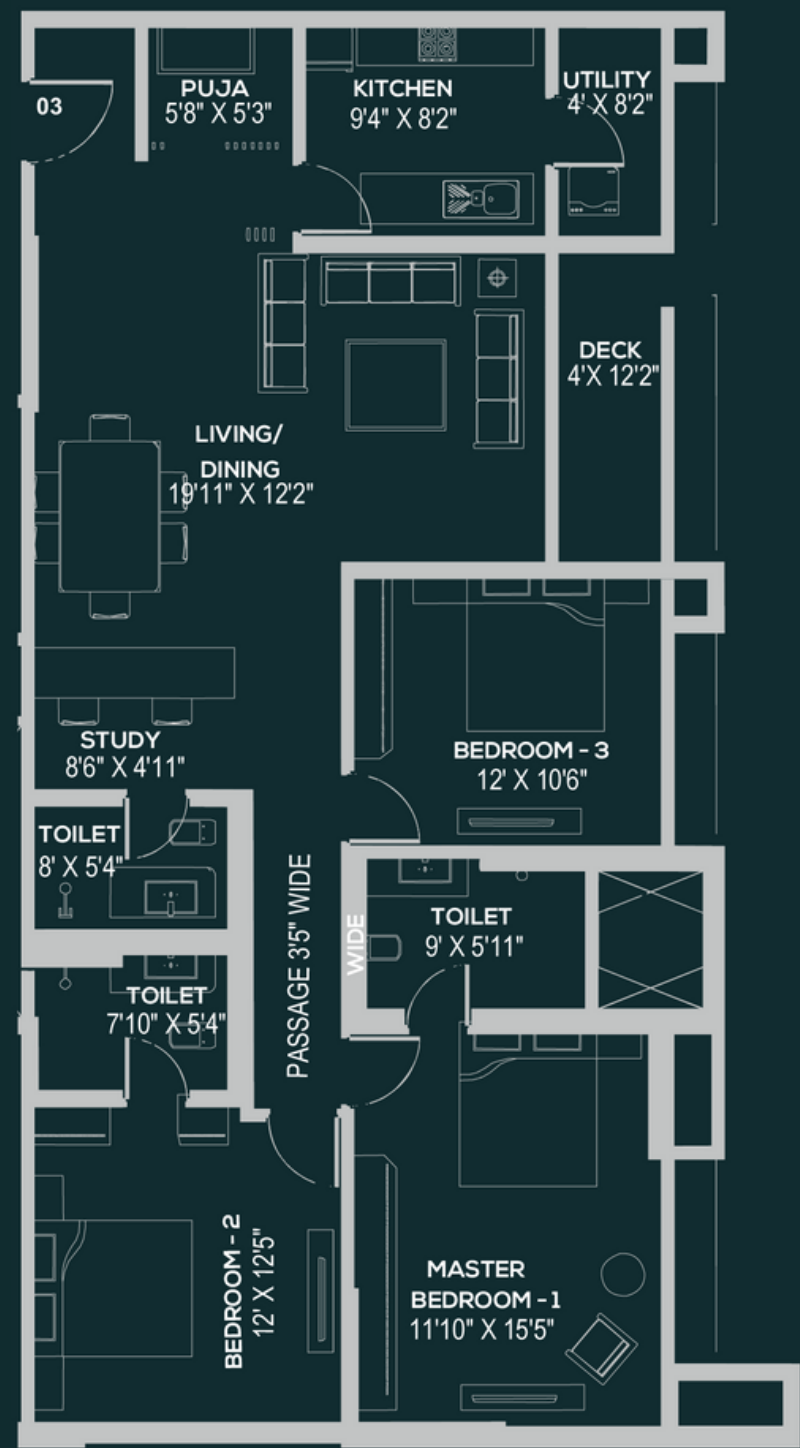


**UNIT - 2**  
SBUA - 3037 SQFT  
4 BHK - LUXURY

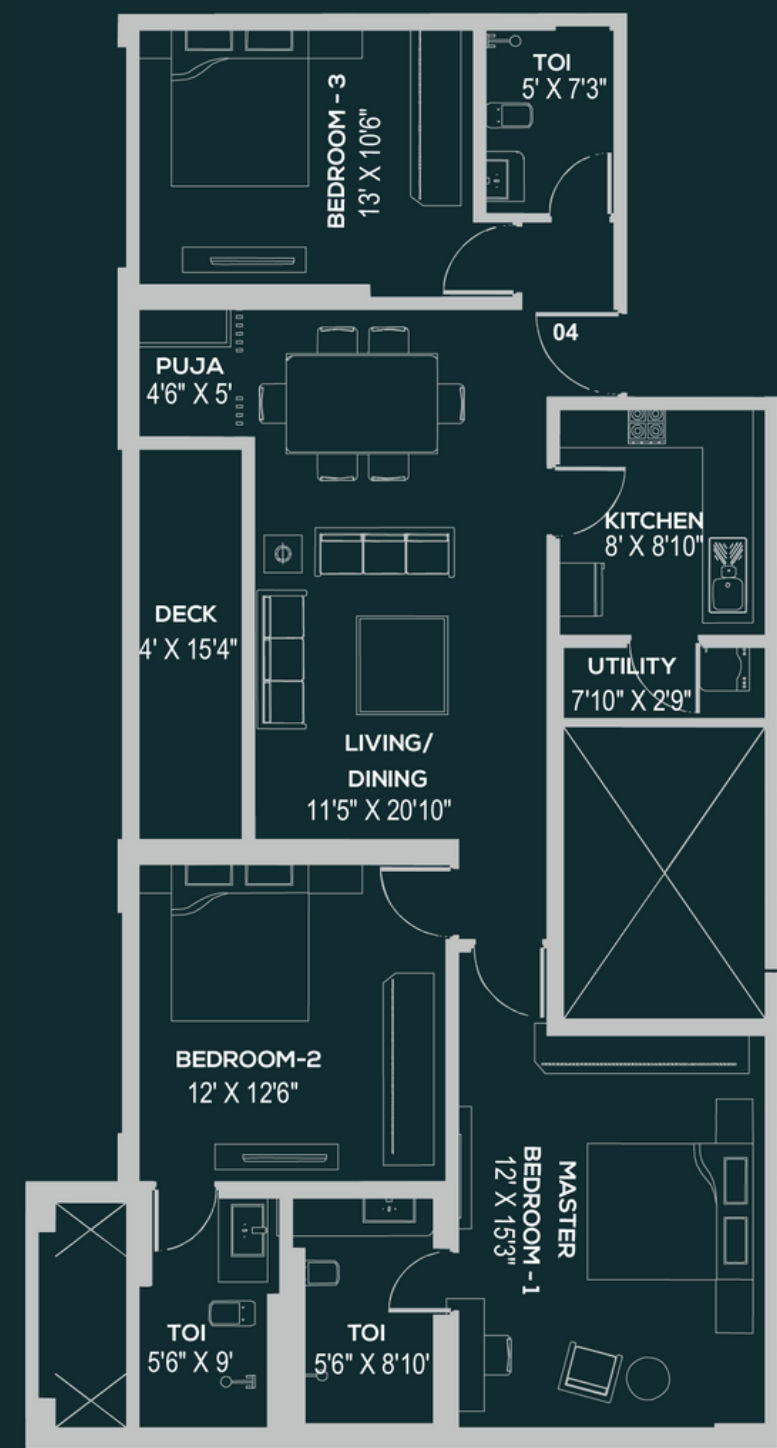




TYPICAL UNIT PLAN  
TOWER : KAYA, YUNA



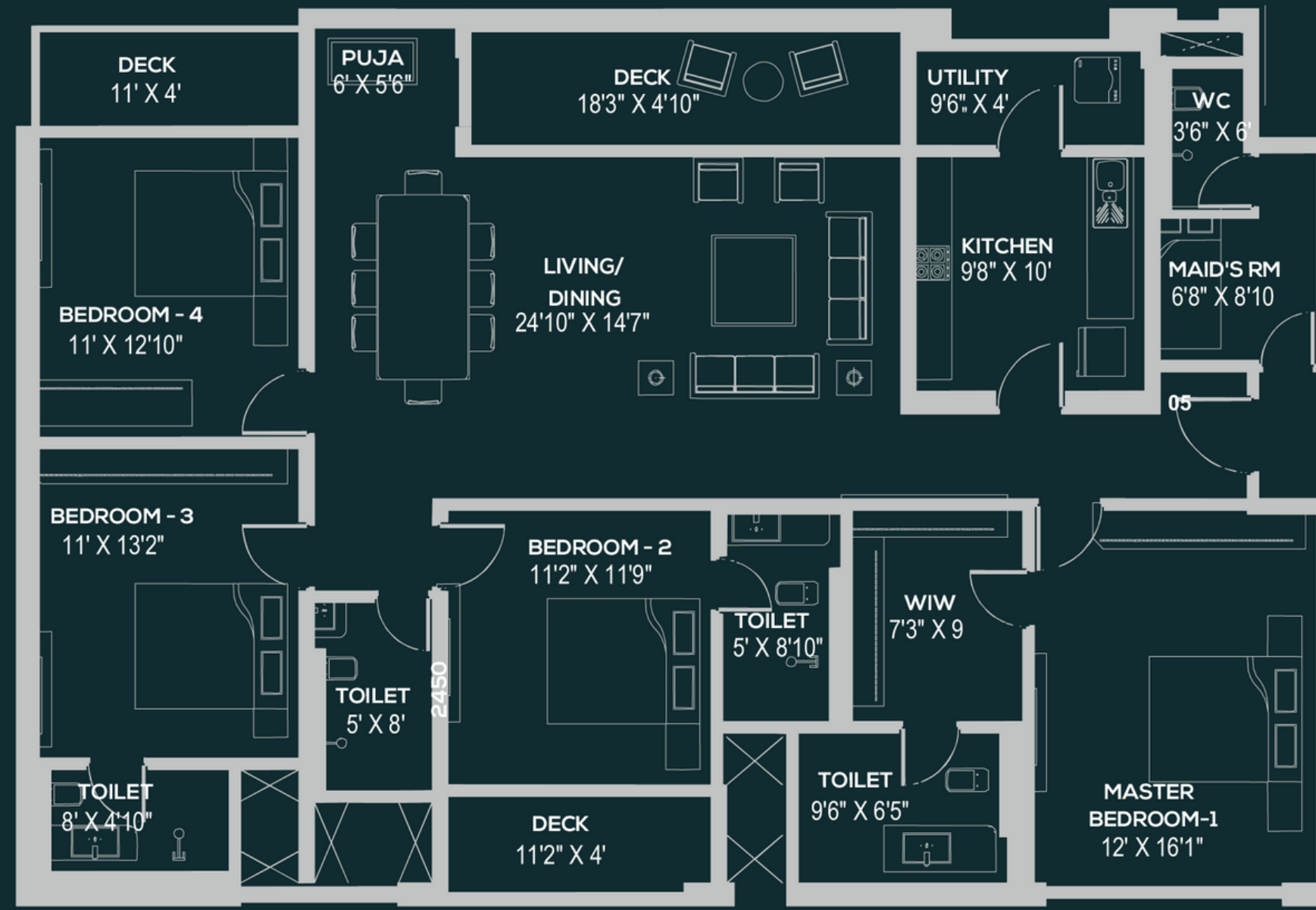
**UNIT - 3**  
SBUA - 1935 SQFT  
3 BHK - PREMIUM - 1



**UNIT - 4**  
SBUA - 1761 SQFT  
3 BHK PREMIUM - 2







**TYPICAL UNIT PLAN**  
TOWER : KAYA, YUNA

## UNIT - 5

SBUA - 2679 SQFT  
4 BHK - PREMIUM

